

5046-1E Cam Assembly

for

Polaris Outlaw 500 & Predator 500

Contents

- 1 cam with pin pressed in
- 1 Woodruff key
- 1 bearing
- 1 sprocket
- 1 spring

Disassemble stock cam and reuse the OEM decompressor and spacer.



Decompressor



Spacer



1. Cam profile



2. Install spring into hole



3. Hold spring in while sliding OEM decompressor over



4. Make sure flange on decompressor is facing out



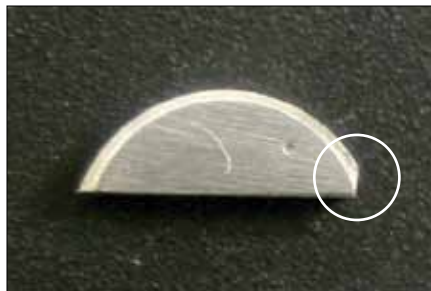
5. Slide on OEM spacer



6. Slide on bearing



7. Make sure groove on bearing faces inward



8. If applicable, flat edge on key should face the bearing



9. Place key into slot



10. With teeth facing out, fit sprocket by hand with key still in place



11. Using a press, press sprocket on to the cam



12. Continue to press sprocket until it is flush with the cam shaft